



Transforming Skylines Across India



Our Portfolio Today..

RESIDENTIAL - 28

DELIVERED
17

UNDER CONSTRUCTION
11

RETAIL - 110 LAKH SQ FT

DELIVERED
53 LAKH SQ FT

UNDER CONSTRUCTION
57 LAKH SQ FT

OFFICES - 37 LAKH SQ FT

DELIVERED
30 LAKH SQ FT

UNDER CONSTRUCTION
07 LAKH SQ FT

HOSPITALITY - 1753 KEYS

DELIVERED
1,059 KEYS

UNDER CONSTRUCTION
694 KEYS

Lifestyles Inspired Globally On Various Themes



M3M Golfestate - Resort Style Golf Living



M3M Merlin - Lifestyle Inspired By Singapore

Not Only Established New Ecosystems

But Also Stayed In Tuned With

Ever Evolving Customer Aspirations!

RISE IN
NEED OF



RESORT
LIVING

Community
Living

Value Based
Amenities

Homes with
Adaptable
Needs

Surrounded By
Nature

Healthy Lifestyle

Safe & Secure
Environment

What Are Today's Customers Aspiring For?

Resort Like
Lifestyle



Yet Connected
to the world



Rapidly Emerging As The Hotspot Of Gurugram

Sought After
Connectivity

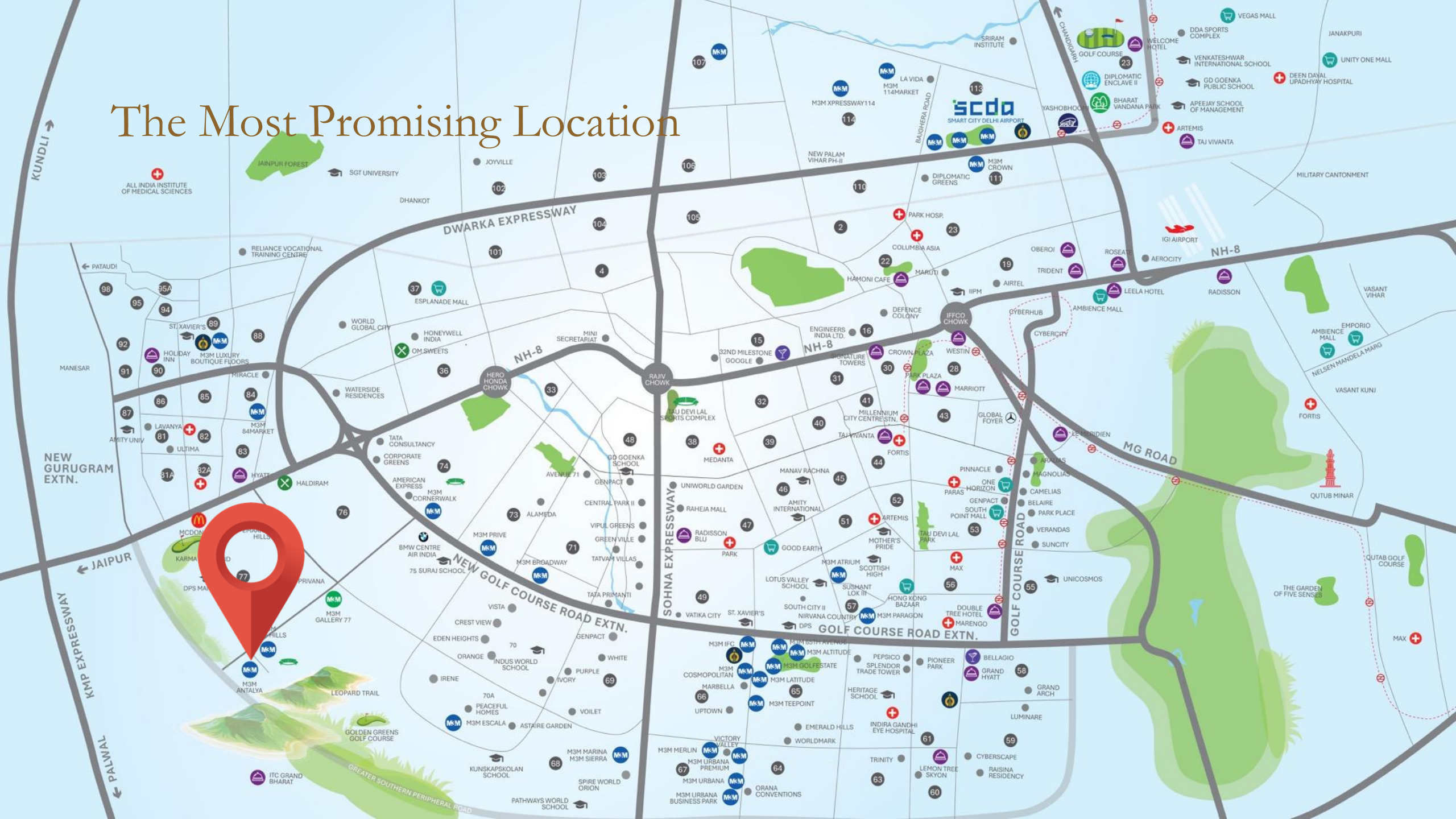
One Of The Rare
Location Next To The
Hills In NCR

Strong
Social Fabric

Infrastructure
Development

Large Corporates
Intensive Movement

The Most Promising Location



Strong
Social Fabric

Strong
Social Fabric

DPS, Manesar
Kunskapsskolan, Gurgaon
Amity University, Gurgaon
St. Xaviers
Bal Bharati Public School
Mount Olympus School



Cricket Stadium
Karma Lakelands
Golden Greens Golf &
Resorts Classic Golf &
Country Club ITC Grand
Bharat
Jungle Safari & Trails
Tarudhan Valley

Recreation
Zone

Infrastructure
Development



Large Corporates In The Vicinity

AMERICAN
EXPRESS

AIR INDIA

tcs TATA
CONSULTANCY
SERVICES

genpact



OYO

SUZUKI

TESLA
POWER

SPINNY

In This Fastest Growing Corridor,
We Bring To You More Than
100 Acre Township

Low Rise

M3M
ANTALYA
HILLS

High Rise

M3M
GOLF HILLS



AT

M3M
ANTALYA
HILLS





STATE-OF-
THE-ART
SOCIAL CLUB



A MAGNIFICENT TEMPLE



CONTEMPORARY
LUXURY FLOORS



MODERN
INDOOR
SPORTS
CLUB



AMENITIES

- SQUASH COURT
- BADMINTON COURT
- TABLE TENNIS LOUNGE
- MMA RING & KICK BOXING
- SPORTS LOUNGE
- CAFÉ LOUNGE
- KIDS PLAY AREA
- MULTIPURPOSE HALL
- GYMNASIUM
- YOGA DECK
- RESTAURANT

TPOLOGY

- 1.5 BHK [1053 SQ FT]
- 2.5 BHK [1335 SQ FT]
- 3.5 BHK [1547 SQ FT]

PINE

AMENITIES

KIDS PLAY AREA
CAFÉ & PATISSERIE
BANQUET HALL
MULTIPURPOSE HALL
ARCADE & GAMING
ZONE
GYMNASIUM
YOGA DECK
ELDERLY ZONE
BUTTERFLY GARDEN

TYOLOGY

1.5 BHK [1015 SQ FT]
2.5 BHK [1159 - 1436 SQ FT]
3.5 BHK [1546 - 1660 SQ FT]

CONVENIENCE
MARKET

EVERYDAY ESSENTIALS
STORE

LIFESTYLE
CLUB

MULTIPURPOSE
COURT

PALM

Future Development

MAPLE

AMENITIES

CAFETERIA
FITNESS ZONE
INDOOR POOL
RESTAURANT
KIDS PLAY AREA
SPA & SALON
BAR LOUNGE
CARD ROOM
CIGAR LOUNGE
LIBRARY
ARCADE ZONE
MULTIPURPOSE HALL
YOGA DECK

TYOLOGY

1.5 BHK [1015 SQ FT]

2.5 BHK [1159 - 1436 SQ FT]

3.5 BHK [1546 - 1660 SQ FT]

HALF OLYMPIC SIZE
POOL

CRICKET
ARENA
LIFESTYLE
CLUB

SKATING
RINK

SOCIAL
CLUB

PINE

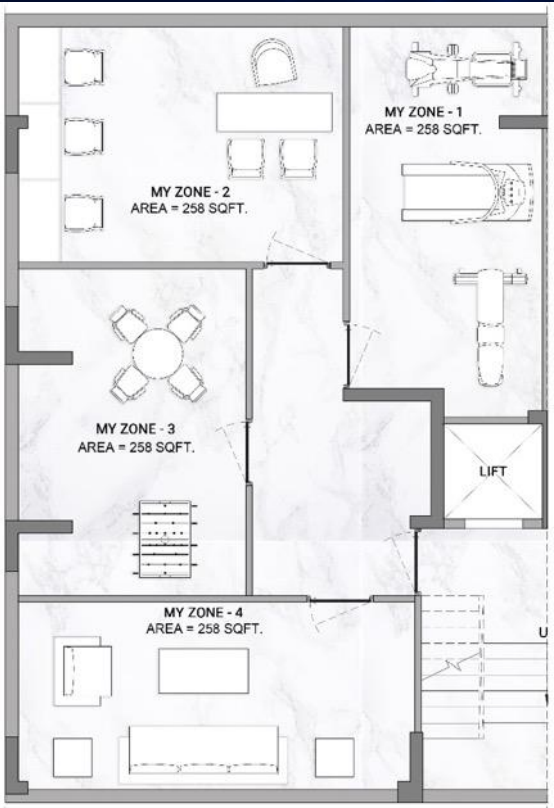
PALM



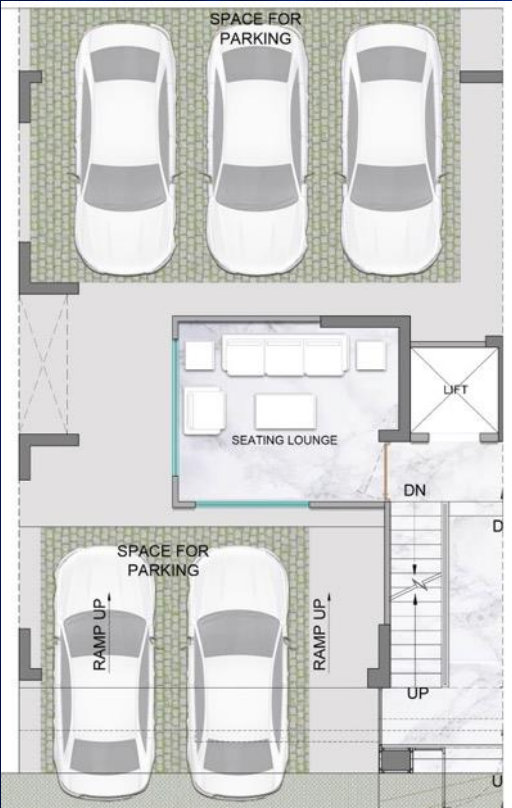
FOUR LEVELS OF ULTIMATE BLISS!



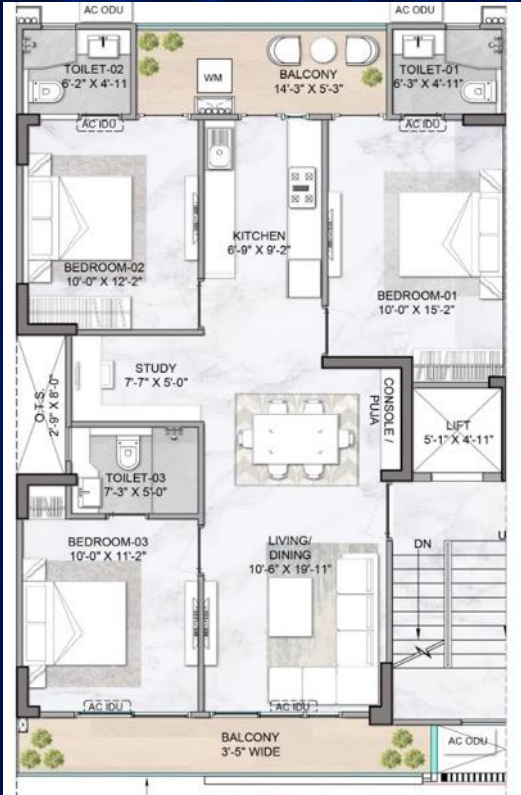
UNIT PLAN 3.5 BHK



MY ZONE



STILT FLOOR



TYPICAL FLOOR

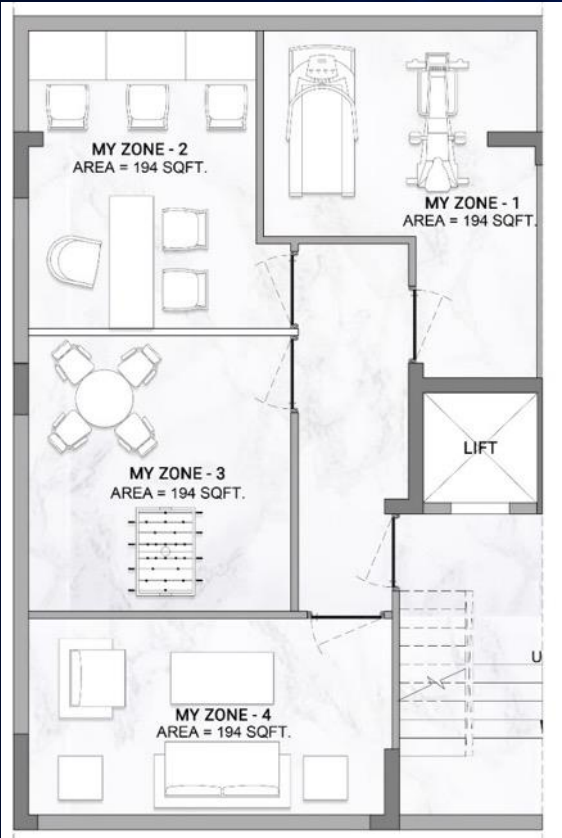


MY AER-LOUNGE

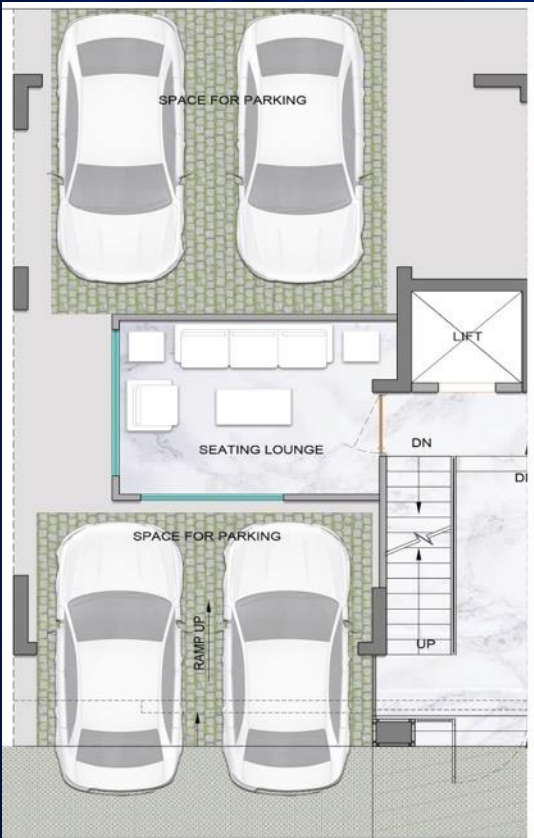
FOUR LEVELS OF ULTIMATE BLISS!



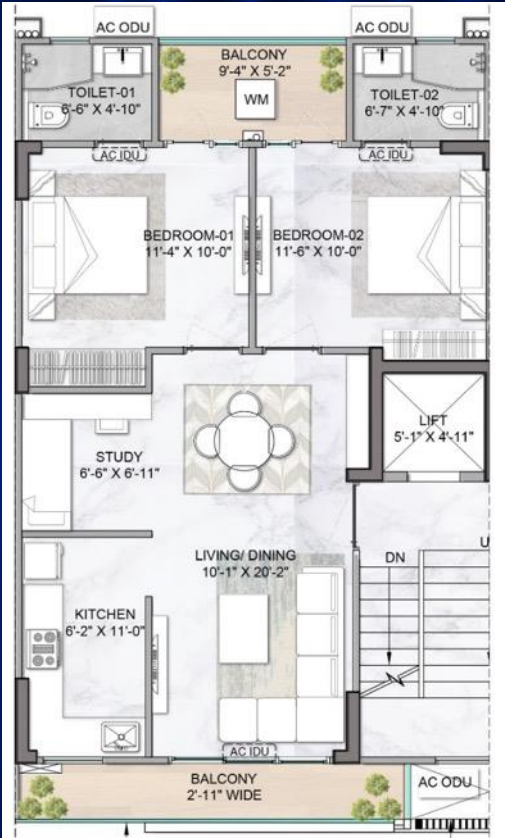
UNIT PLAN 2.5 BHK



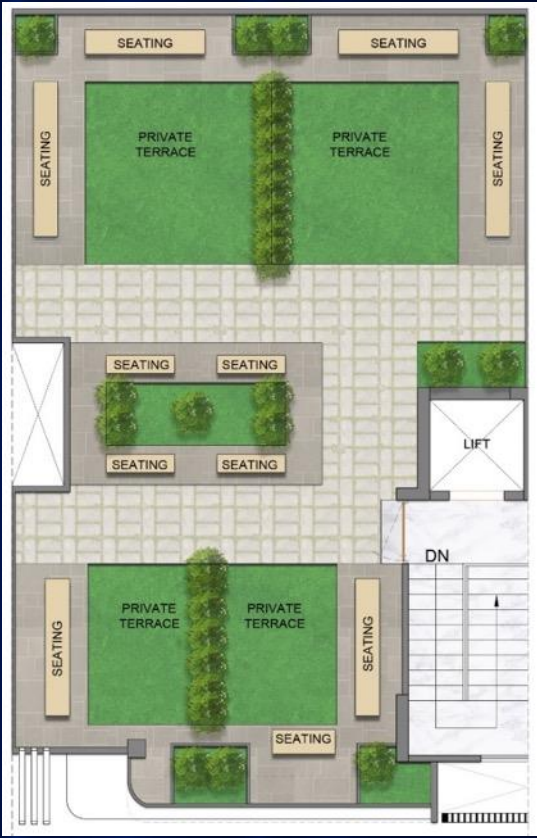
MY ZONE



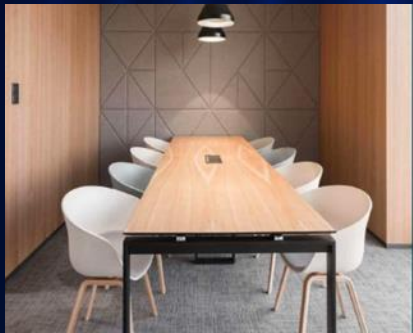
STILT FLOOR



TYPICAL FLOOR



MY AER-LOUNGE



MyZONE



YOUR PERSONAL ZONE
IN THE BASEMENT

My AER-LOUNGE

OWN A
SLICE OF
HEAVEN



Show Apartment Ready

Schedule Your Visit Today!



A NEVER **BEFORE**, NEVER **AGAIN** OPPORTUNITY

THE FINEST
RESORT LIFESTYLE




THE MOST
LUCRATIVE LOCATION



AND AN
EXCEPTIONAL PRICE !

Expect the Prices to Spiral Up!

| |  PINE |  PALM |  MAPLE |  EBONY |
|------------------------|--|--|---|---|
| CURRENT PRICE (BSP) | 14,250 | 13,750 | 13,750 | 13,750 |

EXPECTED PRICE AT POSSESSION **18,000++**

AND NOW, INTRODUCING
TWO PAYMENT PLANS

PAYMENT PLAN:
YIELDSMART

30:70*

PAY JUST
5 LAKHS
AND BOOK
DREAM HOME*

PAY
30%
&
NOTHING
TILL
APPLICATION
OF OC *

GET
12%
RENTALS*

*ON COMPLETION OF 30%, T&C APPLY

PAYMENT PLAN:
EASYOWN

10:90*

PAY
10%
&
NOTHING
TILL
APPLICATION
OF OC *

ZERO
EMI
TILL APPLICATION
OF OC *

*ON COMPLETION OF 30%, T&C APPLY

THERE'S MORE..

1ST
TRANSFER
FREE*

Rs. **8** LAKHS*

ONE
CAR PARK
FREE*

Rs. **6** LAKHS*

CLUB
MEMBERSHIP
FREE*

Rs. **6** LAKHS*

FIRST
YEAR
MAINTENANCE
FREE*

Rs. **0.60** LAKHS*

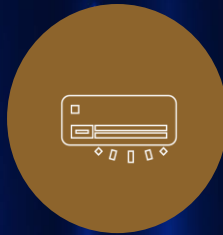
UPTO

20 LAKH+
ADVANTAGE

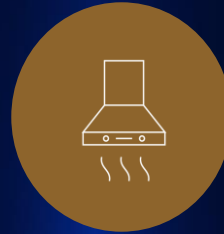
THERE'S EVEN MORE..

EACH HOME COMES WITH
The LUXE UPGRADE PACKAGE

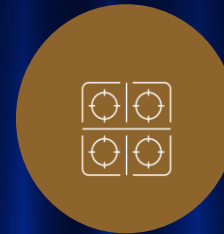
The LUXE UPGRADE PACKAGE



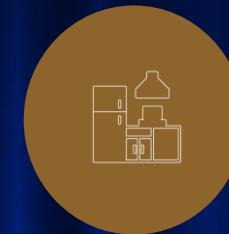
AIRCONDITIONER



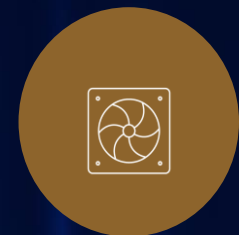
CHIMINEY



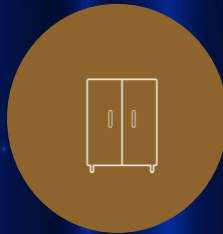
HOB



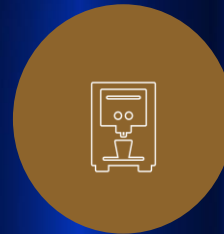
MODULAR
KITCHEN



EXHAUST FAN



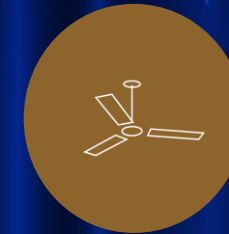
WARDROBES



WATER PURIFIER



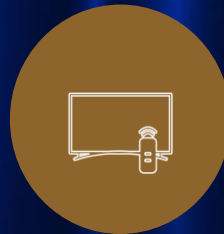
BIOMETRIC LOCK



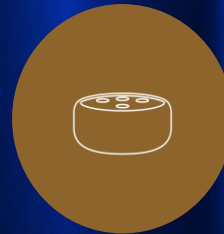
FANS



INTERCOM



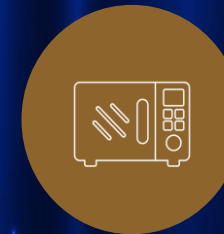
LED TV



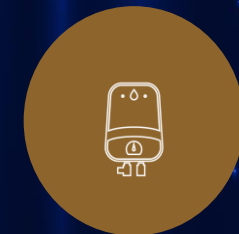
ALEXA SMART
SPEAKER



REFRIGERATOR



MICROWAVE
OVEN



GEYSER

DON'T MISS THIS ONCE IN A LIFETIME OPPORTUNITY !